

PASVE® product family for installation and servicing



SI SATRON
instruments

PASVE® mounting and service valve

- PASVE® is a ball-type mounting & service valve for SATRON VG pressure transmitters
- the safe alternative to transmitter mounting
- ensures high maintainability in installations



PASVE GC
welded on
container



PASVE GP
welded on pipe



PASVE GF
flange type



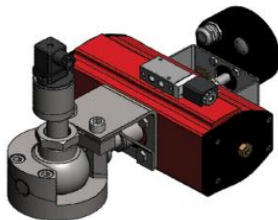
PASVE GC
with pressure transmitter VG



PASVE GF
with an actuator

PASVE® BA mounting and service valve

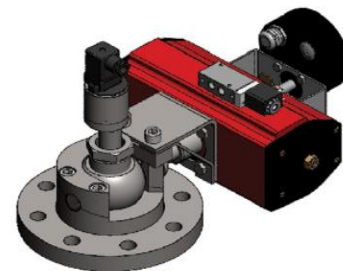
- PASVE® BA is a ball-type mounting & service valve for SATRON VL- and VDtL - pressure and differential pressure transmitters and also for Satron HPS hydraulic pressure seals.



PASVE BA C
welded
on container



PASVE BA F
flange type



PASVE BA F
with double-action
actuator

PASVE BA P
welded on pipe

PASVE® BA makes it simple to disconnect the transmitter from the process for checking, changing the transmitter, flushing and calibration without stopping the process.

PASVE® BA is available in a manually operated type or equipped with a pneumatic actuator.



PASVE BA
with pressure transmitter VL



PASVE® pH mounting and service valve

- for cleaning and calibration of pH and O₂ sensors without stopping the process

Standard sensor connection:
PG13.5/length 120 mm

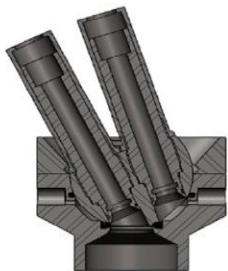
Satron Instruments Inc. has designed the adapter for following pH sensors:

Satron S508
Broadley-James Dynaprobe II
Broadley-James S410
Broadley-James DynaProbe ST856
Honeywell Durafet II, smooth tip
Honeywell Meredian II and Durafet II guarded tip
Barben 546/556
Barben 551/561
in-line Barben 551/561 (manual only)
E+H CPF81, guarded tip, machined
E+H CPF81 -flat glass, machined
E+H CPF81/82, guarded tip, not machined
E+H CPF81, flat glass, not machined

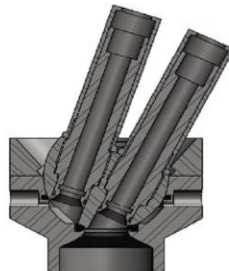
Foxboro 871A
Foxboro 871pH
Foxboro PH10-3
Foxboro PH10-2
in-line Foxboro PH10-2
Lange (GLI) PD1P1.99
Lange (GLI) DPD1P1.99
Hamilton Inchtrode N75P
Hamilton Inchtrode N75F
Kemotron 4835 and 4837 UPW
Orbisphere (31110)
Polymetron 8350/51
Rosemount 389
Rosemount 385+
Rosemount 396TUpH
in-line Rosemount 396P (manual only)
Rosemount 396P
Rosemount 3300HT/HTVP
Rosemount 3500/3500VP
ABB TB556 (38 mm insertion depth), flat glass
ABB TB557
ABB TB564
ABB TB561
in-line ABB TB564 (manual only)
in-line ABB TB561 (manual only)
ABB TB556 (28 mm insertion depth), flat glass
Yokogawa FU20

PASVE® DUAL mounting and service valve

- PASVE® DUAL is mounting and service valve for two pH sensors of diameter 12 mm. It can be used with practically all pH sensors in this size category.
- PASVE® DUAL is available in a manually operated type or equipped with a pneumatic or electric actuator.



Position A
Sensor 1
in measurement
and sensor 2
in flushing,
in calibration
or in maintenance



Position B
Sensor 1
in flushing,
in calibration or
in maintenance
and sensor 2
in measurement



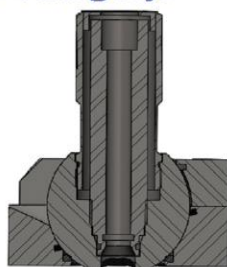
Standard sensor connection:
PG13.5/Ø12, length 120 mm

PASVE® pH-U mounting and service valve

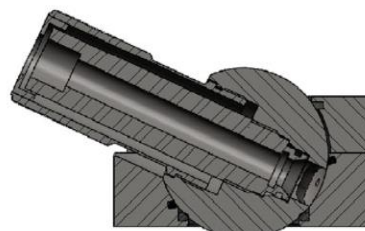
- PASVE® pH-U is a mounting/service valve for Ø12 mm pH sensors. It can be used with practically all pH sensors in this size category.



Standard sensor connection
PG13.5/Ø12/length 120 mm



Measuring position
Sensor in measurement.
Valve's and sensor's water
cooling through flushing channel.



Servicing and calibration position
Sensor turned to cleaning,
calibrating and protective position
without stopping the process.



PASVE SC

The PASVE® SC/SF/SH/SP/ST can be used in any industrial process where it is necessary obtain a sample from the process which is not influenced or contaminated from any outside disturbances.

PASVE is the registered trademark of Satron Instruments Inc.

PASVE® SC/SF/SH/SP/ST sampling valve

The PASVE® SC/SF/SH/SP/ST is a miniature ball valve which readily accepts commercially available septum hygienic rubbers.

The PASVE® SC/SF/SH/SP/ST provides you with the opportunity of taking hygienic samples from your process without interrupting the process.



PASVE ST

SI SATRON
instruments

Satron Instruments Inc.

P.O.Box 22, FI-33901 Tampere, Finland

Tel: +358 207 464 800, Fax: +358 207 464 801

www.satron.com, info@satron.com

MILKTRONICS™

USA distributor

5125 Sugar Crest Dr Sugar Hill 30518 GA

Tel: 352-508-1296

www.milktronics.com